



The Challenger

Glyndon United Methodist Church

May 2024

Inside This Issue

Pastor's Article	1
Announcements/Events	3
Visitation List	5
Stay Connected	5
Flower & Plant Sale Flyer	6
May Calendar	7

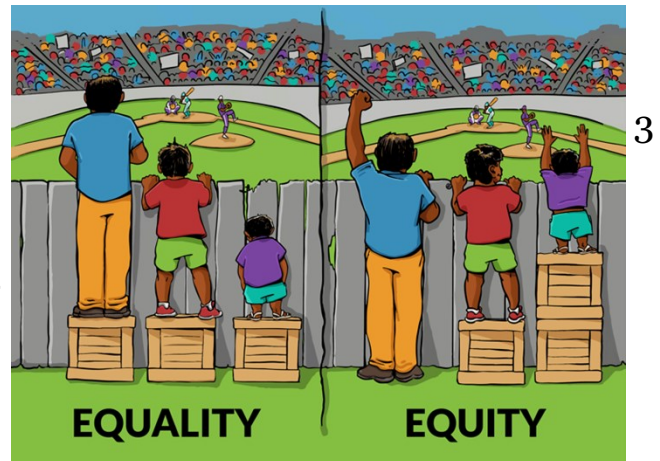
Let's Lift-Up one another!

There are only eight small steps in total. From the entrance of the church to the fellowship hall, there are only eight steps. Hurrying my busy steps, I quickly counted the number of stairs again. Perhaps it was around the time of the weight-lifting construction that I started counting the number of stairs I walk every day, without much thought. These stairs that our school children walk on every day, and sometimes run around comfortably, these stairs that everyone uses comfortably to access to our church hall, are not the same for everyone. I knew it in my head, but it probably truly resonated with me when the weight-lifting equipment finally started to be installed. I stared for a while. I remembered the conversations I had with him, one of our church members, right here at the entrance of the church, during many moments when he couldn't yet enter the hall. How many moments of frustration did he and his family feel at this entrance... Looking at the people going up the stairs to the hall so naturally, what were they thinking...

John Rawls, an American philosopher in moral and political matters, advocates for the Principle of Equity, asserting that every individual is entitled to fair opportunities, regardless of their ethnicity, gender, or social status.

Rawls emphasizes the importance of justice, which entails ensuring equal access to resources and recognizing that people start from different and often unfair circumstances.

He posits that justice isn't solely about treating everyone equally, but rather about creating equity by leveling the playing field. In line with this perspective, the Gospel, particularly Luke chapter and Isaiah chapter 40, says, "Every valley shall be filled, and every mountain and hill shall be made low, and the crooked shall be made straight, and the rough ways made smooth." —actions symbolizing equity.



Seeking equity for all people is a way to prepare the way of the Lord. Whenever we level the playing field, we are ushering the Lord closer into the world. We are practicing, “Thy will be done as it is in heaven.” Justice seekers are also called to “watch over one another in love.”

Well, some might wonder, what does weightlifting have to do with justice? However, we must not forget that justice can be trampled upon by our everyday reckless actions, speech, language, indifference, and countless other things that we pass by without much thought.



The answer is Love, once again. Amid countless and myriad explanations, the conclusion is love. Love is the answer. And your decision to love someone that is coming from your intentional effort and will changes our actions, words, attitudes, and thoughts.

Love has power!

It's because it leads us to find a way.

Among various options and priorities, Glyndon church families proudly and gratefully chose weightlifting. We believe that our decision that comes from our willingness to embrace more people is expanding our open circle even further.

Therefore encourage one another and build each other up, just as in fact you are doing.

(1 Thessalonians 5:11)

**Blessings,
Dong Eun Lee**



Glyndon UMC's Lift-up Weightlift

Announcements/Events

GUMC Finance Committee Update

Please note that the Finance Committee will now meet on the **third Monday of each month** at 7:00 p.m. in the Parlor. Their next meeting will be on **Monday, May 20th**.

GUMC's New Lift is Working!

We are very glad to say that we have a wonderful new lift in the lobby that will allow members and visitors with mobility issues to access Dew Hall. The lift will allow these people to participate in more of the events and programming that our church has to offer. If you need to use the lift in order to access Dew Hall, Chuck Bradley, Bobby Talbert, John Leitzel, or any member of the Church Trustees can assist you in learning how to use it properly. Please keep in mind that this very expensive upgrade to our church's facilities is not a toy and should not be used by people who don't have a legitimate need to use it.

GUMC Spring Yard Sale: This event will be held on **Saturday, May 11th** from 8:00 a.m. to 2:00 p.m. at Glyndon Church. To demonstrate that Glyndon UMC and Glyndon Christian School are active parts of the wider Glyndon community, GUMC's Yard Sale will take place on the same date as the Glyndon Community Yard Sale and the Glyndon Volunteer Fire Department Yard Sale. **If you are interested in having a table at the GUMC Yard Sale, please add your name to the sign-up sheet on the table in the lobby to let us know you are interested.** There will be no fee for a table at our yard sale. However, we encourage sellers to make a modest donation to Glyndon Church based on the proceeds they take in during the sale. More details will follow. In the meantime, **get that box of yard sale treasures filling up!**

Women's Fellowship Lunch for May

While **Sunday, May 12th**, is Mother's Day, there **will be** a Women's Fellowship Lunch at Alfeo's Italian Kitchen at 11:15 a.m. that day. Debbie Chatham will be there for lunch for any ladies who would like to join her.

Ladies' High Tea

There will be a Ladies' High Tea after the service on **Sunday, May 19th** in Dew Hall. If you would like to participate, please sign up on the High Tea poster on the bulletin board just inside the lobby off the parking lot.

Announcements/Events continued

The Glyndon UMC Flower & Plant Sale is Coming!

We are getting ready for the Annual Flower & Plant Sale on **Saturday, May 25th, from 9:00 a.m. to 1:00 p.m.**, on the front and side yards of the church.

There are some things we need to do and gather for that day. These are:

1. Bring and set up canopies.
2. Bring Shepherds' Hooks or plant stands for the Hanging Basket placements.
3. Move tables from Dew Hall to outside yards.
4. Distribute Flower Sale flyers to neighbors and post around town.
5. Help restore last year's signs.
6. Donate small water bottles and individually wrapped snacks, protein bars, and cereal bars for the Refreshment Table.

If you can help with any of these items, please indicate on the sign-up sheet on the lobby table or speak to Jan Bradley.

Music Sunday & Teacher Appreciation Sunday will be **Sunday, June 2** at 10:00 a.m. - Don't miss this chance to say "**Thank you!**"

3rd Annual Glyndon UMC Ice Cream Social:

Our 3rd Annual Ice Cream Social will be held on **Saturday, June 22nd** from 2:00 to 4:00 p.m. Please invite your friends and neighbors and join other church members in celebrating the start of summer by enjoying an ice cream sundae! If the weather is good, this event will be held outdoors. If it is raining, the event will be moved indoors. This will be a **free** event. Please join us...and bring your friends!

Pickleball:

If getting more exercise is one of your goals, please consider joining GUMC and Glyndon community members to play Pickleball on **Wednesday evenings from 5:15 to 8:00 p.m.** No experience is needed to get started and people of all ages are welcome.

Office Hours: Clarice is in the office on Mondays from 11:00a - 1:00p and Thursdays from 1:30p - 3:30p.

Visitation List

Reach out and share God's love through a card, call or visit.

Dottie Meekins

Acts Fairhaven
Health Care Room 109
7200 Third Avenue
Sykesville MD 21784
443-609-0048

Jackie Meixner

FutureCare Cherrywood
12020 Reisterstown Road
Reisterstown MD 21136
410-517-6530

June Pearce

410-804-6646

Joan S. Poling

Sunrise Senior Living
3800 Old Court Road, Room 232
Pikesville MD 21208
410-415-0245

Dora Sabo

Carroll Lutheran Village
Health Care Center, Room 401
200 St Luke Circle
Westminster MD 21158

Challengers are mailed to these members each month.

Stay Connected

What's up at Glyndon UMC? Our Mission is to: "Love. Pray. Serve."

We offer several ways to keep you connected to learn about upcoming worship, fellowship, and service ministries as well as special events for all ages. We encourage you to invite a friend or neighbor to join you. Here's some op-



- Worship with us on Sundays and read the bulletin insert with a calendar of activities for the week.
- Check out our church website: glyndonumchurch.org.
- Sign up for our church-wide email and receive Friday News & Highlights every week.
- If you sign up for emails, you will also receive our newsletter, The Challenger, the first of each month. It's chock full of information on the month ahead plus "save-the-date" info on future events, new worship series, fellowship activities and service opportunities.
- Follow us on Facebook and hear about what's coming up and check out the pictures of our church family in action.
- Check the bulletin boards on the church lobby and along the hallways to Dew Hall for flyers on church and community events, youth activities, and sign-up sheets.

There is something for everyone—all ages, singles, couples, and families.

Consider deepening your participation by joining one of our volunteer planning committees or leadership teams. Jan Bradley or our committee chairs can provide details to help you find a slot that matches your interests and to select something that will utilize your personal gifts for a more enjoyable experience.



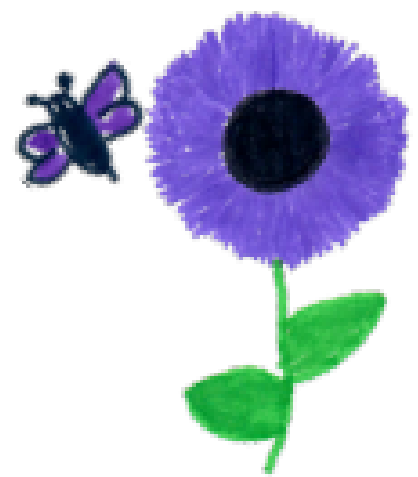
Flower & Plant Sale

at
Glyndon United Methodist Church

Front Lawn

Saturday
May 25, 9-1

Cash Only



May 2024

Sun

Mon

Tue

Wed

Thu

Fri

Sat

			1	2	3	4 8a Men's Breakfast
5 9a Choir Practice 10a Worship— Communion 11a First Sunday Fellowship	6	7 7p Kiwanis	8 5:15p Pickleball	9	10	11 8 a—2 p Yard Sale
12 9a Choir Practice 10a Worship 11:15a Women's Lunch at Alfeo's	13 7p Trustees	14	15 9:30 am Chapel 5:15p Pickleball	16	17	18
19 9a Choir Practice 10a Worship 11:30a Ladies' Tea	20 7p Finance	21	22 5:15p Pickleball 7p Kiwanis	23	24	25 9a-1p Flower & Plant Sale
26 9a Choir Practice 10a Worship	27 Memorial Day Office Closed	28	29 5:15p Pickleball	30	31	